

**Note: As the children anticipate Santa as the final entry . . . .**

**No other entries may dress as SANTA CLAUS in the parade.**

You will receive entry number and map.

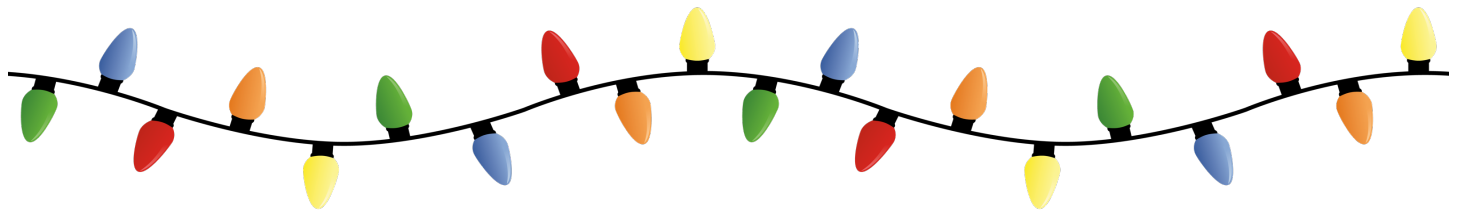
Line up begins at 4:30 p.m.



## PARADE RULES:

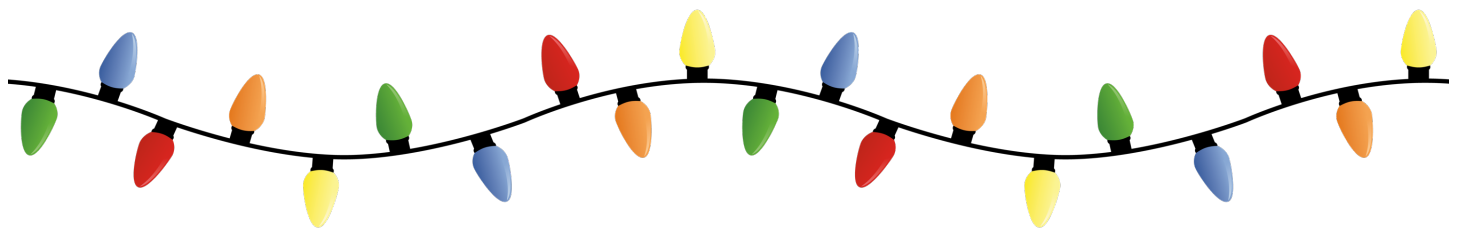
1. **YOU MUST MAINTAIN COMPLETE CONTROL AND TAKE RESPONSIBILITY FOR YOUR PARADE ENTRY.**
2. **EVERY ENTRY MUST** have **CHRISTMAS LIGHTS.**
3. **NO THROWING** of objects or candy from parade entry; participants may walk along side of entry to hand out items; PLEASE stay along side of entry.
4. **NO HORN HONKING – NO SIRENS**
5. SPACING – Maintain approximately 50 feet between each entry.
6. Follow instruction of the event volunteers before, during and after parade.
7. Please take home what you brought (hay, paper, decorations, etc.).
8. Identification numbers are to be placed on the left side of entry.
9. Someone 18 or older must accompany entrants under 8 years of age.
10. Float with Walking Group – Age 6 and under must ride on the float.  
Walkers should be in costume and lights.
11. **ALL VEHICLES MUST BE LIGHTED.**
12. HORSE ENTRIES are required to submit a signed “Release of Liability” form with the parade entry.
13. HORSE ENTRIES: **A chin strap is required for all entries.**  
**Riders age 8 and under must be on a lead line.**
14. PLEASE have a representative from your entry report to Division Marshals at least 30 minutes prior to parade time.

**For your safety, please . . . . . *Bring FLASHLIGHTS!!***

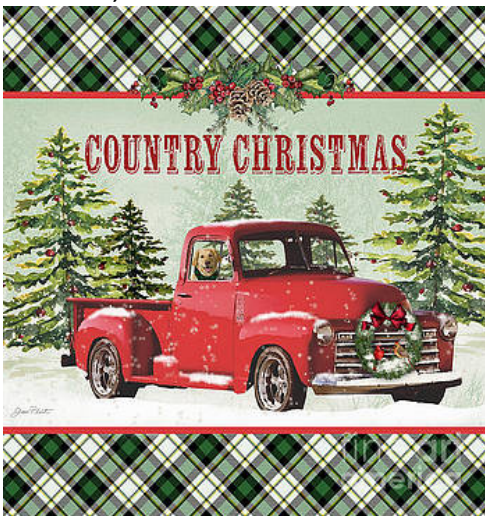


You are invited to participate in  
Kerman's 23rd Annual Night Christmas Parade  
**"Country Christmas"**  
**Pageantry of Lights**

December 14, 2019 at 6:00 p.m.  
Madera Avenue - "C" Street to "G" Street



Kerman Chamber of Commerce  
783 South Madera Avenue  
Kerman, CA 93630-1744



**"COUNTRY CHRISTMAS"**  
**Pageantry of Lights Parade**  
**Entry Form Due 11-15-19**



# KERMAN'S CHRISTMAS PARADE

"COUNTRY CHRISTMAS"

*Pageantry of Lights*

**December 14, 2019 - 6:00 p.m.**

**Parade Entry Due 11-15-19**

Name \_\_\_\_\_ Phone \_\_\_\_\_

Address \_\_\_\_\_ City & Zip \_\_\_\_\_

Contact Person \_\_\_\_\_ Phone \_\_\_\_\_

**CATEGORY:** (Circle All That Applies)    Float    Horse Entry    Walking Entry    Marching Unit  
Truck & Trailer **NO HORN HONKING**

**PARADE ENTRY DESCRIPTION:** \_\_\_\_\_

i.e.: reindeer & sleigh, 38 marching angels, float, truck, etc.

Include total number of vehicles & participants \_\_\_\_\_

**Brief commentary for announcer:** \_\_\_\_\_

\_\_\_\_\_

\_\_\_\_\_



**LIGHTS! LIGHTS! LIGHTS! LIGHTS!**  
**Don't forget to "light" you parade entry!**



**PARADE RULES WILL BE ENFORCED FOR THE SAFETY OF EVERYONE!**

**Your signature** certifies that you enter this parade at your own risk and hold the Sponsors associated with this parade free of any responsibility or liability. The Kerman Chamber of Commerce reserves the exclusive right to exclude/remove any participant whose conduct violates the purpose or policies of the event.

**I have read the PARADE RULES on the next page and agree to comply by the rules.**

Signature of adult in charge \_\_\_\_\_ Date \_\_\_\_\_

**MAIL ENTRY FORM TO:**

**Kerman Chamber of Commerce 559.846-6343**  
**783 S. Madera Avenue 559.846-6344 fax**  
**Kerman, CA 93630**

**Email: [kparade1@sebastaincorp.net](mailto:kparade1@sebastaincorp.net)**  
**[www.kermanchamber.org](http://www.kermanchamber.org)**